

Comprehensive Arkansas Higher Education Annual Report

December 1, 2009



College-Going Rate

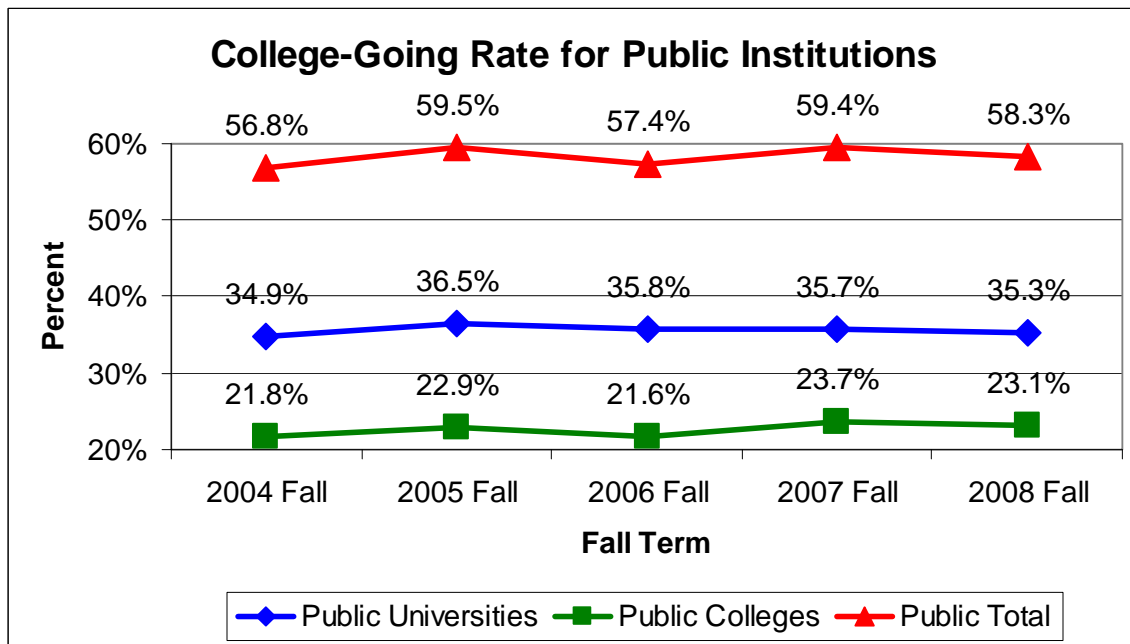
Arkansas Department of Higher Education

114 East Capitol, Little Rock, Arkansas 72201

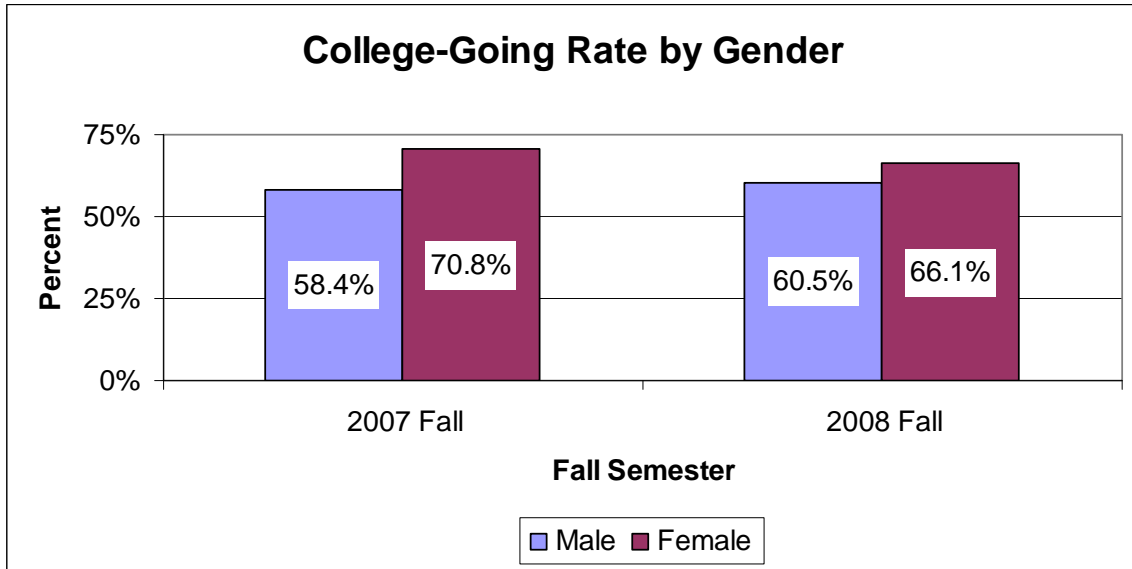
Report on College-Going Rate

The college-going rate measures the proportion of students enrolling in postsecondary education in the fall semester after finishing high school, in most cases, immediately after high school. Current data are based on the fall 2008 student cohort enrolled first-time, full-time, and on-campus that attend an Arkansas public or independent institution after completing high school or GED. Since most students enrolling in postsecondary education do so immediately after completing high school, the college-going rate is an indicator of the total proportion that will enroll in postsecondary education. The percentage, therefore, reflects the accessibility of higher education as well as students' assessment of the value of attending college when compared to working, entering the military, traveling, or following other pursuits.

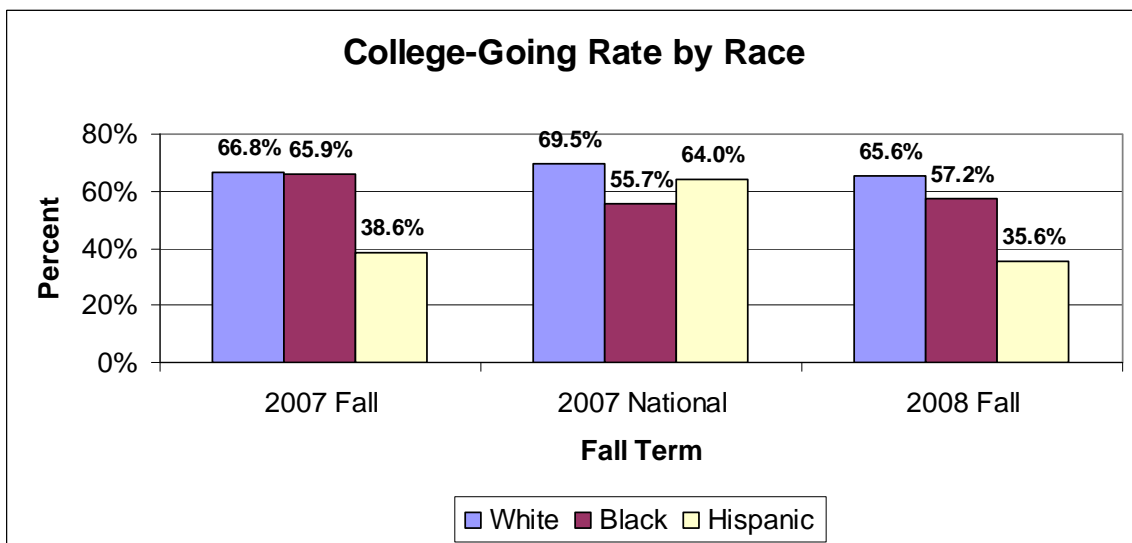
The college-going rate for all Arkansas **public and independent institutions** in fall 2008 is **63.4 percent**. This is a decrease of 1.3 percent from the previous fall term (Attachment 4-A). The proportion of this cohort entering public universities decreased by 0.4 percentage points to 35.3 percent, while the public colleges experienced a decrease of 0.6 percentage points to 23.1 percent. The proportion of the cohort entering private or independent institutions decreased by 0.2 percentage points (from 5.3 percent to 5.1 percent). The college-going rate for all public institutions in fall 2008 decreased by 1.1 percentage points to 58.3 percent.



The **public and independent** college-going rate in Arkansas in 2008 for females is 66.1 percent (a decrease of 4.7 percentage points) compared to 60.5 percent for males (an increase of 2.2 percentage points). The college-going rate **nationally**¹ in 2007 for females is 68.3 percent (an increase of 2.2 percentage points) and for males is 66.1 percent (an increase of 0.3 percentage points).



The **public and independent** college-going rate in 2008 for Arkansas white students is 65.6 percent (a decrease of 1.2 percentage points), for blacks is 57.2 percent (a decrease of 8.7 percentage points), and for Hispanics is 35.6 percent (a decrease of 3.0 percentage points). The college-going rate **nationally**² in 2007 for white students is 69.5 percent, for black students is 55.7 percent, and for Hispanics is 64.0 percent.



The 2008 cohort base of 17,940 first-time, full-time, on-campus enrollments from Arkansas is 1.9 percent more than the previous year, while the number of high school graduates is increased by 4.0 percent from one-year earlier (see Attachment 4-A). Recent projections by NCEES indicate an expected increase of 17.0 percent of high school graduates for the period from 2004-05 to 2017-18³. Projected trends in the number of high school graduates could be impacted by changes in policies affecting graduation requirements.

The national college-going rate of 67.2 percent for fall 2007, the most recent year for which national data are available, increased by 1.2 percentage points from the previous year⁴ (Attachment 4-B). Arkansas' college-going rate for the same year was 64.7 percent, representing a 2.5 percentage point difference. Much of the difference between the national rate and the rate of Arkansas is attributed to the out-migration of students, that is, Arkansas freshmen entering higher education in states other than Arkansas. If this out-migration number was included, Arkansas' college-going rate would be substantially higher (73.9 percent)⁵. However, since Arkansas is a net in-migrator of entering freshmen students (more out-of-state students come to Arkansas for college rather than Arkansans leave the state for college), this comparison is not valid and is used here only for illustrative purposes.

ADHE Executive Staff recommend that the AHECB accept this report. Arkansas' college-going rates have remained consistent with nation rates and Arkansas is a net in-grating state with a projected increase of high school graduates. However, these indicators only focus on traditional-aged students at the beginning of the pipeline – enrollment. To achieve higher degree production, retention in addition to college-going rates must be considered for traditional as well as non-traditional students.

¹ National Center for Education Statistics, *Digest of Education Statistics 2008*, Table 200

² National Center for Education Statistics, *Digest of Education Statistics 2008*, Table 201

³ National Center for Education Statistics, *Projections of Education Statistics to 2017*, Table 26

⁴ National Center for Education Statistics, *Digest of Education Statistics 2008*, Table 201

⁵ National Center for Education Statistics, *Digest of Education Statistics 2008*, Table 223

**COLLEGE-GOING RATE FOR FIRST-TIME, FULL-TIME, ON-CAMPUS STUDENTS
GRADUATING FROM ARKANSAS HIGH SCHOOLS AND
ATTENDING ARKANSAS INSTITUTIONS, 2004-2008**

INSTITUTION	FIRST-TIME STUDENTS FOR FALL TERM									
	2004		2005		2006		2007		2008	
	Headcount	Percent	Headcount	Percent	Headcount	Percent	Headcount	Percent	Headcount	Percent
Public Four-Year										
ASUJ	1,039	3.8%	1,208	4.5%	1,345	5.0%	1,328	4.9%	1,357	4.8%
ATU	1,233	4.5%	1,228	4.6%	1,219	4.5%	1,469	5.4%	1,391	4.9%
HSU	473	1.7%	461	1.7%	473	1.8%	615	2.3%	587	2.1%
SAUM	451	1.7%	407	1.5%	406	1.5%	338	1.2%	418	1.5%
UAF	1,840	6.8%	1,851	7.0%	1,851	6.9%	1,903	7.0%	1,874	6.6%
UAFS	711	2.6%	670	2.5%	684	2.6%	746	2.7%	834	2.9%
UALR	688	2.5%	665	2.5%	548	2.0%	736	2.7%	560	2.0%
UAM	541	2.0%	547	2.1%	556	2.1%	514	1.9%	587	2.1%
UAMS	-	0.0%	-	0.0%	-	0%	-	0.0%	-	0.0%
UAPB	428	1.6%	422	1.6%	344	1.3%	440	1.6%	498	1.8%
UCA	2,088	7.7%	2,269	8.5%	2,171	8.1%	1,624	6.0%	1,868	6.6%
Four-Year Sub-Totals	9,492	34.9%	9,728	36.5%	9,597	35.8%	9,713	35.7%	9,974	35.3%
Public Two-Year										
ANC	257	0.9%	270	1.0%	212	0.8%	233	0.9%	196	0.7%
ASUB	525	1.9%	567	2.1%	574	2.1%	595	2.2%	782	2.8%
ASUMH	233	0.9%	204	0.8%	166	0.6%	188	0.7%	237	0.8%
ASUN	106	0.4%	120	0.5%	129	0.5%	123	0.5%	198	0.7%
BRTC	340	1.3%	311	1.2%	380	1.4%	463	1.7%	356	1.3%
CCCUA	84	0.3%	107	0.4%	122	0.5%	152	0.6%	151	0.5%
EACC	256	0.9%	227	0.9%	235	0.9%	215	0.8%	217	0.8%
MSCC	131	0.5%	127	0.5%	139	0.5%	140	0.5%	165	0.6%
NAC	366	1.3%	370	1.4%	331	1.2%	365	1.3%	409	1.4%
NPCC	330	1.2%	282	1.1%	254	0.9%	306	1.1%	354	1.3%
NWACC	522	1.9%	535	2.0%	551	2.1%	642	2.4%	622	2.2%
OTC	185	0.7%	186	0.7%	156	0.6%	165	0.6%	164	0.6%
OZC	153	0.6%	186	0.7%	164	0.6%	212	0.8%	174	0.6%
PCCUA	201	0.7%	205	0.8%	146	0.5%	142	0.5%	176	0.6%
PTC	780	2.9%	994	3.7%	830	3.1%	895	3.3%	811	2.9%
RMCC	153	0.6%	104	0.4%	110	0.4%	98	0.4%	99	0.3%
SACC	166	0.6%	104	0.4%	97	0.4%	131	0.5%	156	0.6%
SAUT	73	0.3%	104	0.4%	116	0.4%	161	0.6%	166	0.6%
SEAC	287	1.1%	230	0.9%	271	1.0%	222	0.8%	205	0.7%
UACCB	190	0.7%	226	0.8%	202	0.8%	229	0.8%	207	0.7%
UACCH	281	1.0%	220	0.8%	188	0.7%	282	1.0%	205	0.7%
UACCM	315	1.2%	424	1.6%	417	1.6%	483	1.8%	473	1.7%
Two-Year Sub-Totals	5,934	21.8%	6,103	22.9%	5,790	21.6%	6,442	23.7%	6,523	23.1%
Public Total	15,426	56.8%	15,831	59.5%	15,387	57.4%	16,155	59.4%	16,497	58.3%
Private/Independent										
ABC	74	0.3%	74	0.3%	102	0.4%	270	1.0%	251	0.9%
CBC	70	0.3%	90	0.3%	75	0.3%	100	0.4%	79	0.3%
CRC	40	0.1%	40	0.2%	39	0.1%	42	0.2%	43	0.2%
HC	170	0.6%	149	0.6%	202	0.8%	180	0.7%	172	0.6%
HU	220	0.8%	216	0.8%	214	0.8%	226	0.8%	241	0.9%
JBU	63	0.2%	61	0.2%	74	0.3%	86	0.3%	85	0.3%
LC	116	0.4%	87	0.3%	96	0.4%	98	0.4%	73	0.3%
OBU	183	0.7%	181	0.7%	193	0.7%	187	0.7%	199	0.7%
PSC	NR	NR	75	0.3%	55	0.2%	61	0.2%	63	0.2%
SC	NR	NR	NR	NR	NR	NR	NR	NR	NR	NR
UO	75	0.3%	98	0.4%	91	0.3%	93	0.3%	118	0.4%
WBC	123	0.5%	114	0.4%	112	0.4%	110	0.4%	119	0.4%
Independents Sub-Total	1,134	4.2%	1,185	4.5%	1,253	4.7%	1,453	5.3%	1,443	5.1%
Total Entering Cohort	16,560		17,016	2.8%	16,640	-2.2%	17,608	5.8%	17,940	1.9%
Arkansas HS Graduates	27,181		26,621	-2.1%	26,822	0.8%	27,206	1.4%	28,295	4.0%
COLLEGE-GOING RATE		60.9%		63.9%		62.0%		64.7%		63.4%

NOTES:

(1) NR = Not Reported

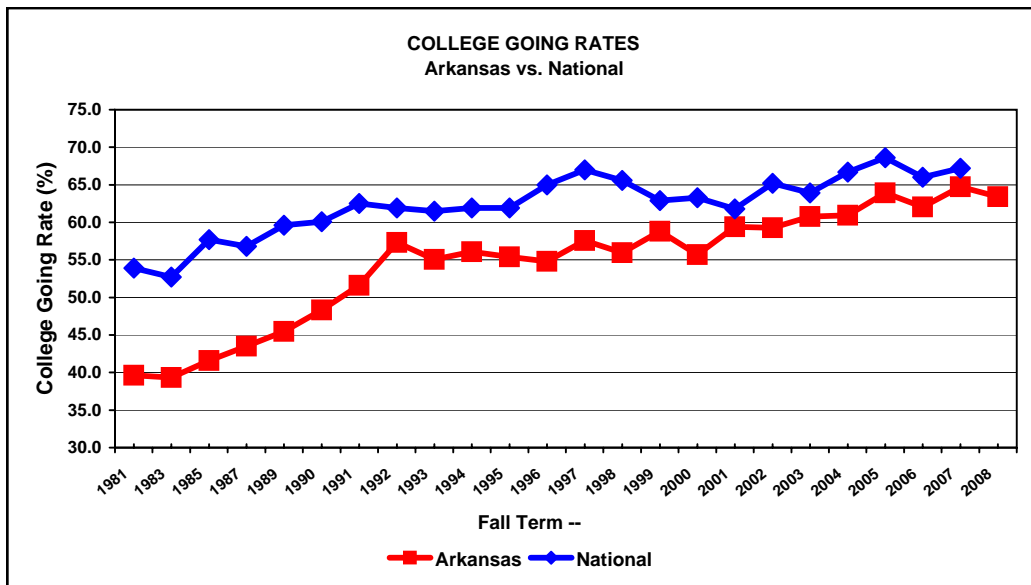
(2) Entering Cohorts = first-time, full-time, on-campus, in-state students at Arkansas public and independent institutions.

(3) College-Going Rate = the entering cohort as a percentage of the total number of students graduating from a public high school in the previous spring.

**ARKANSAS COLLEGE GOING RATE HISTORY
1980 - 2008**

FALL TERM --	# of FIRST-TIME ENTERING, FULL-TIME STUDENTS	# of PUBLIC HIGH SCHOOL SPRING GRADUATES	ARKANSAS COLLEGE GOING RATE	NATIONAL COLLEGE GOING RATE
1980	12,481	29,052	43.0%	49.3%
1981	11,663	29,414	39.7%	53.9%
1982	11,350	29,710	38.2%	50.6%
1983	11,169	28,410	39.3%	52.7%
1984	10,658	27,075	39.4%	55.2%
1985	11,025	26,517	41.6%	57.7%
1986	11,378	26,527	42.9%	53.8%
1987	11,842	27,224	43.5%	56.8%
1988	12,316	27,776	44.3%	58.9%
1989	12,699	27,920	45.5%	59.6%
1990	12,798	26,475	48.3%	60.1%
1991	13,232	25,640	51.6%	62.5%
1992	14,808	25,845	57.3%	61.9%
1993	14,120	25,655	55.0%	61.5%
1994	14,011	24,990	56.1%	61.9%
1995	13,653	24,636	55.4%	61.9%
1996	13,779	25,152	54.8%	65.0%
1997	14,468	25,123	57.6%	67.0%
1998	15,190	27,147	56.0%	65.6%
1999	15,820	26,896	58.8%	62.9%
2000	15,222	27,335	55.7%	63.3%
2001	16,104	27,100	59.4%	61.8%
2002	16,049	27,066	59.3%	65.2%
2003	16,741	27,555	60.8%	63.9%
2004	16,560	27,181	60.9%	66.7%
2005	17,016	26,621	63.9%	68.6%
2006	16,640	26,822	62.0%	66.0%
2007	17,608	27,206	64.7%	67.2%
2008	17,940	28,295	63.4%	

n/a = not available



1 ASUJ merged with Delta Technical institution in 2001, the workforce education at Marked Tree (ASUTC) is non-credit and not reported to ADHE while general education credit courses and students are reported.

2 ATU merged with Arkansas Valley Technical institution effective July 1, 2003

3 UAFS (previously WC) became a four-year institution in January 2002

4 UAM merged with Great Rivers Technical institution and Forest Echoes Technical institution effective July 1, 2003

5 ANC (previously MCCC) merged with Cotton Boll Technical institution effective July 1, 2003

6 ASUB merged with Foothills Technical institution effective July 1, 2003

7 NPCC (previously GCCC) merged with Quapaw Technical institution effective July 1, 2003

Source: SIS; NCES, Digest of Education Statistics 2007; Table 191 S:\P & A\College Going Rate\09-CGRHIST.xls

Arkansas Higher Education Coordinating Board

Agenda Item #5 Annual Report on College-Going Rate July 31, 2009



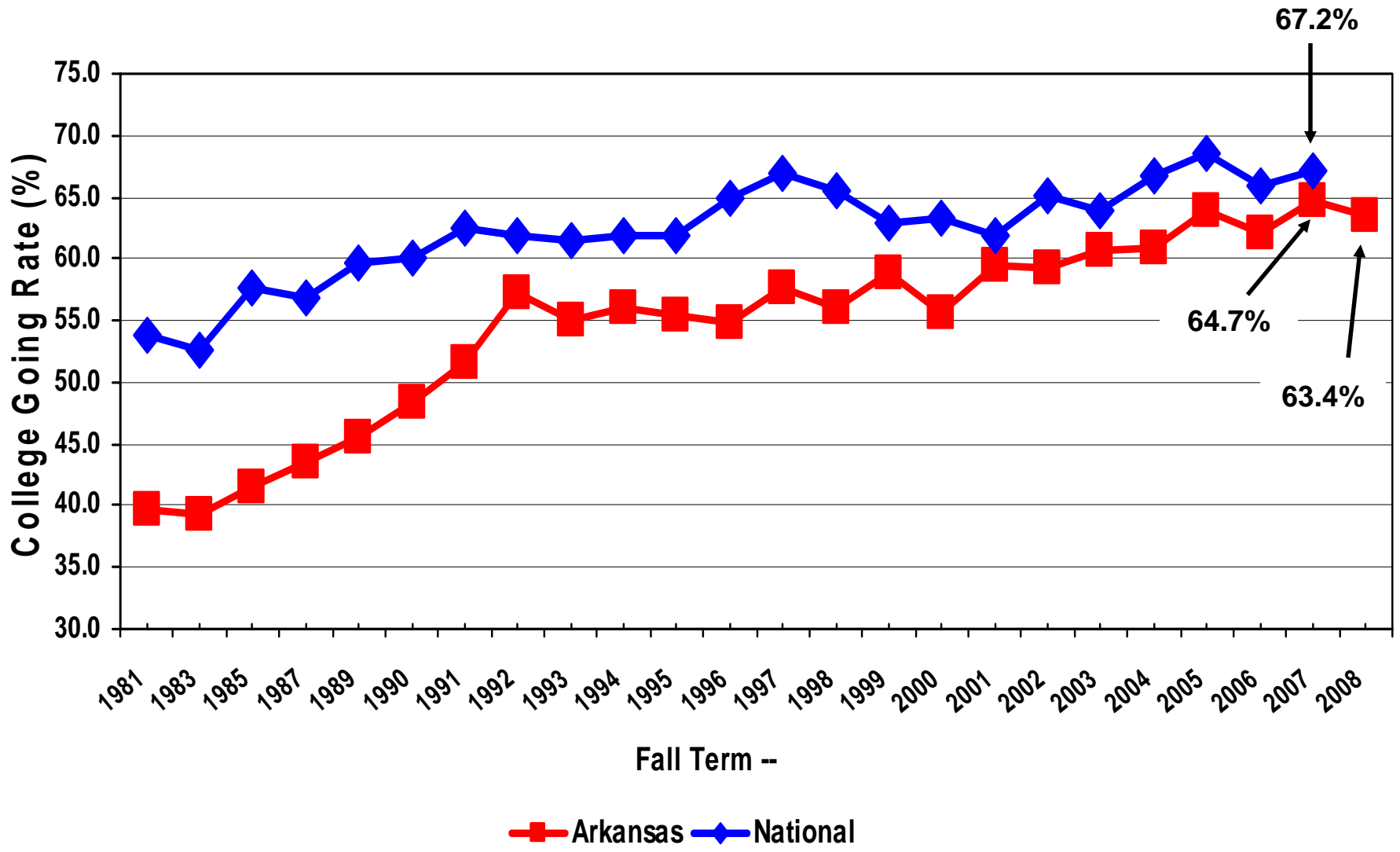
**Rick Jenkins
Associate Director for Planning and Accountability**

College-Going Rate

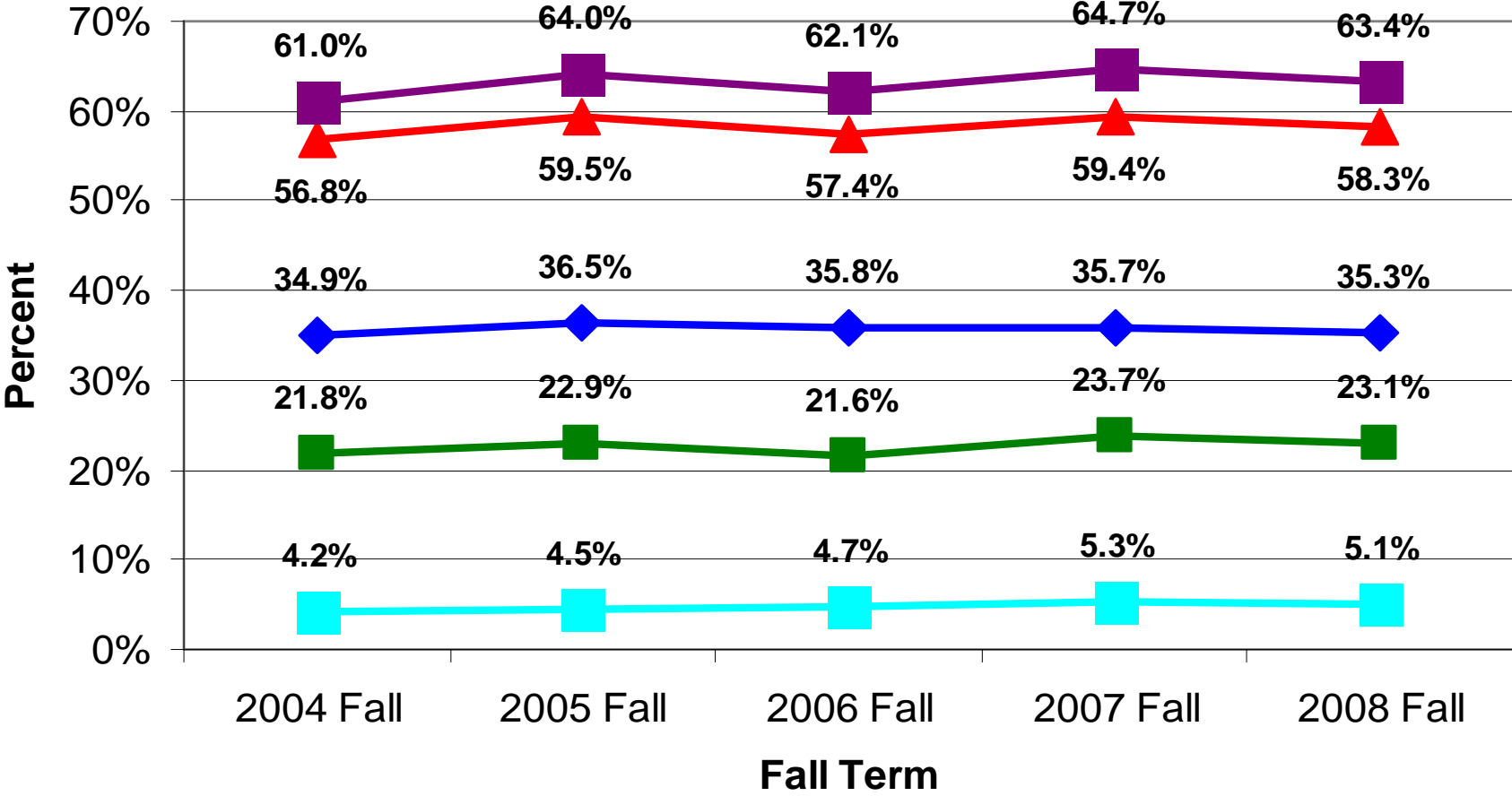
- **Fall 2008 Cohort (AY 2009)**
- **First-Time**
- **Full-Time**
- **On-Campus**
- **High School Diploma or GED**
- **Arkansas Public and Independent Institutions**



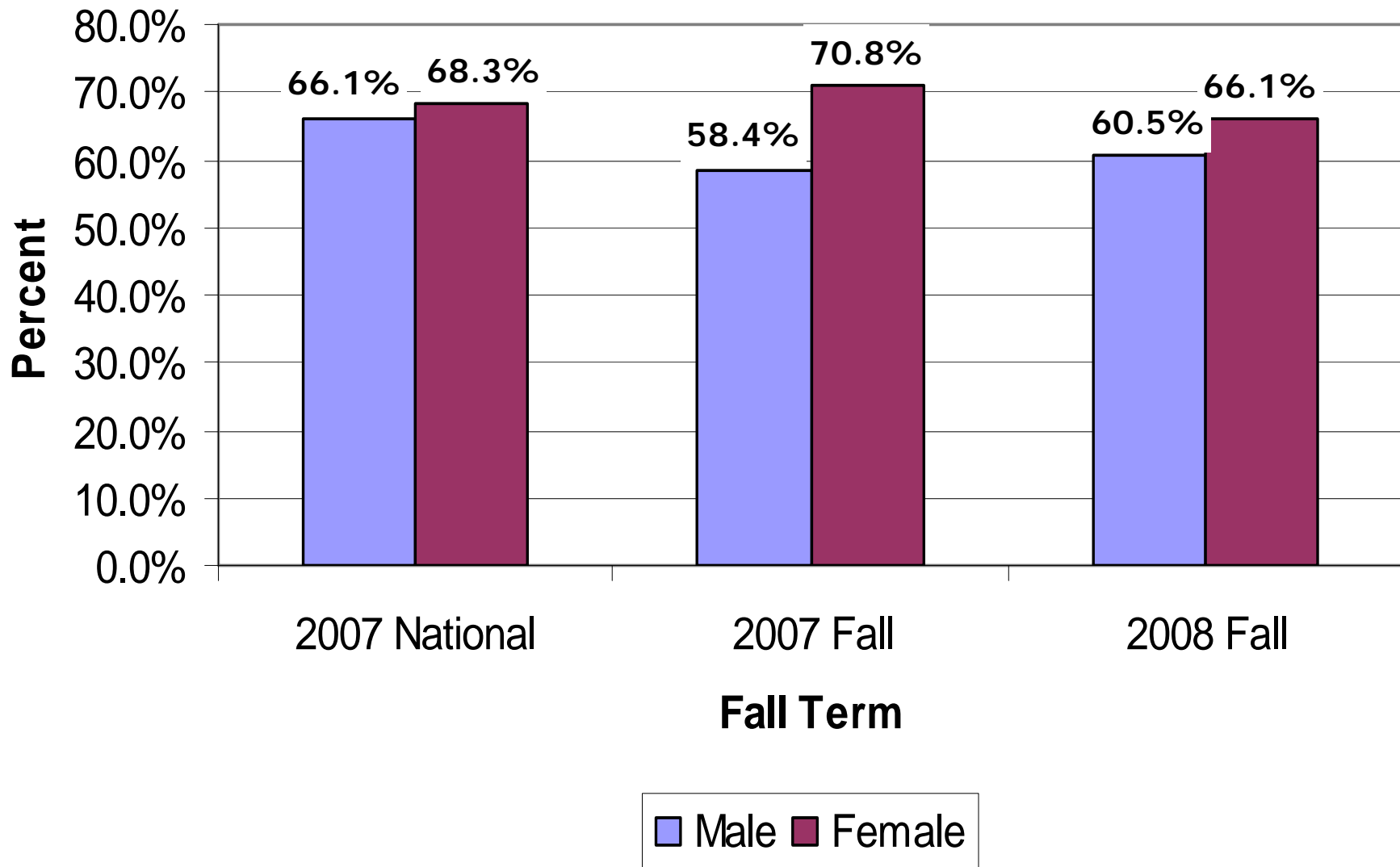
COLLEGE GOING RATES Arkansas vs. National



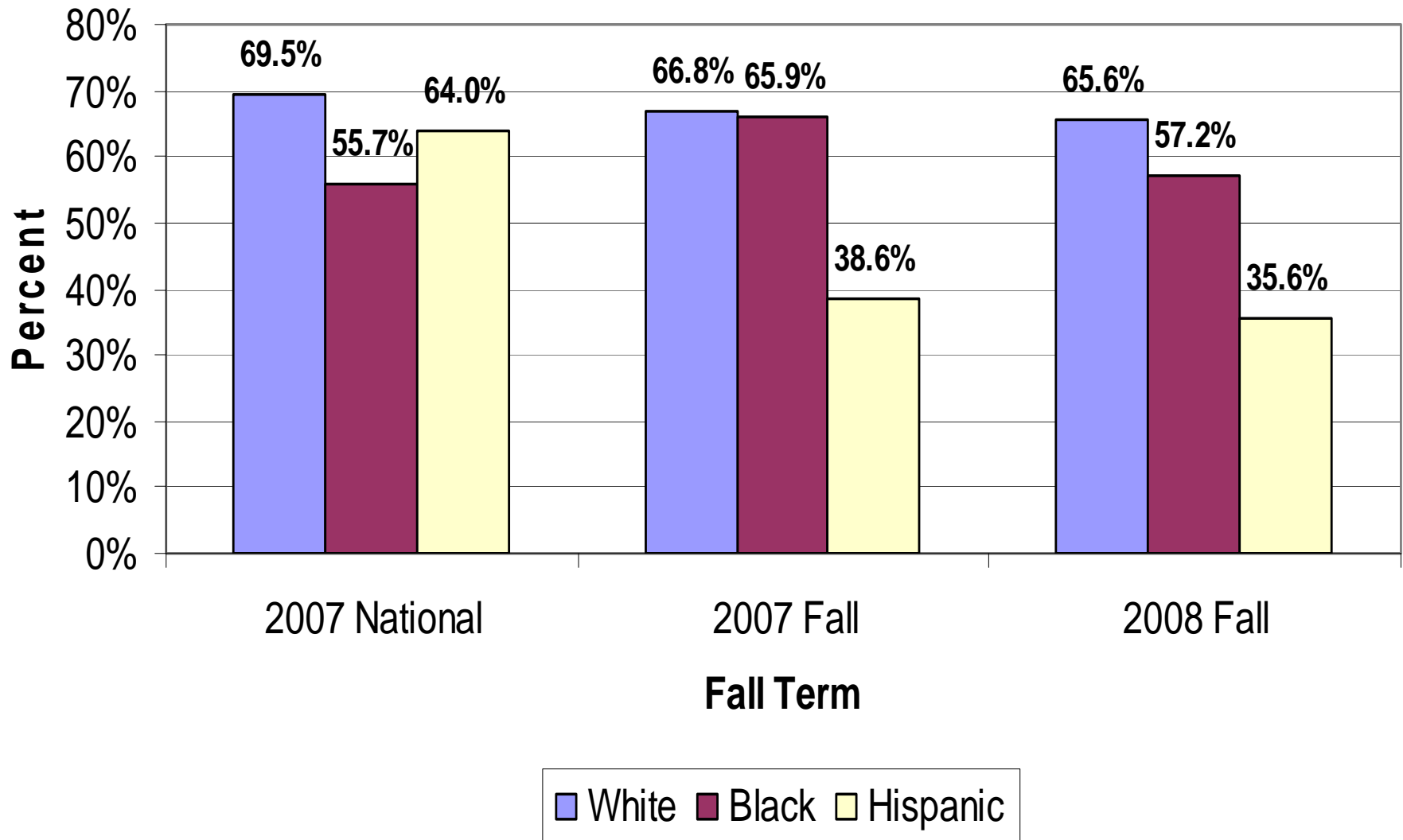
College-Going Rate for Arkansas Institutions



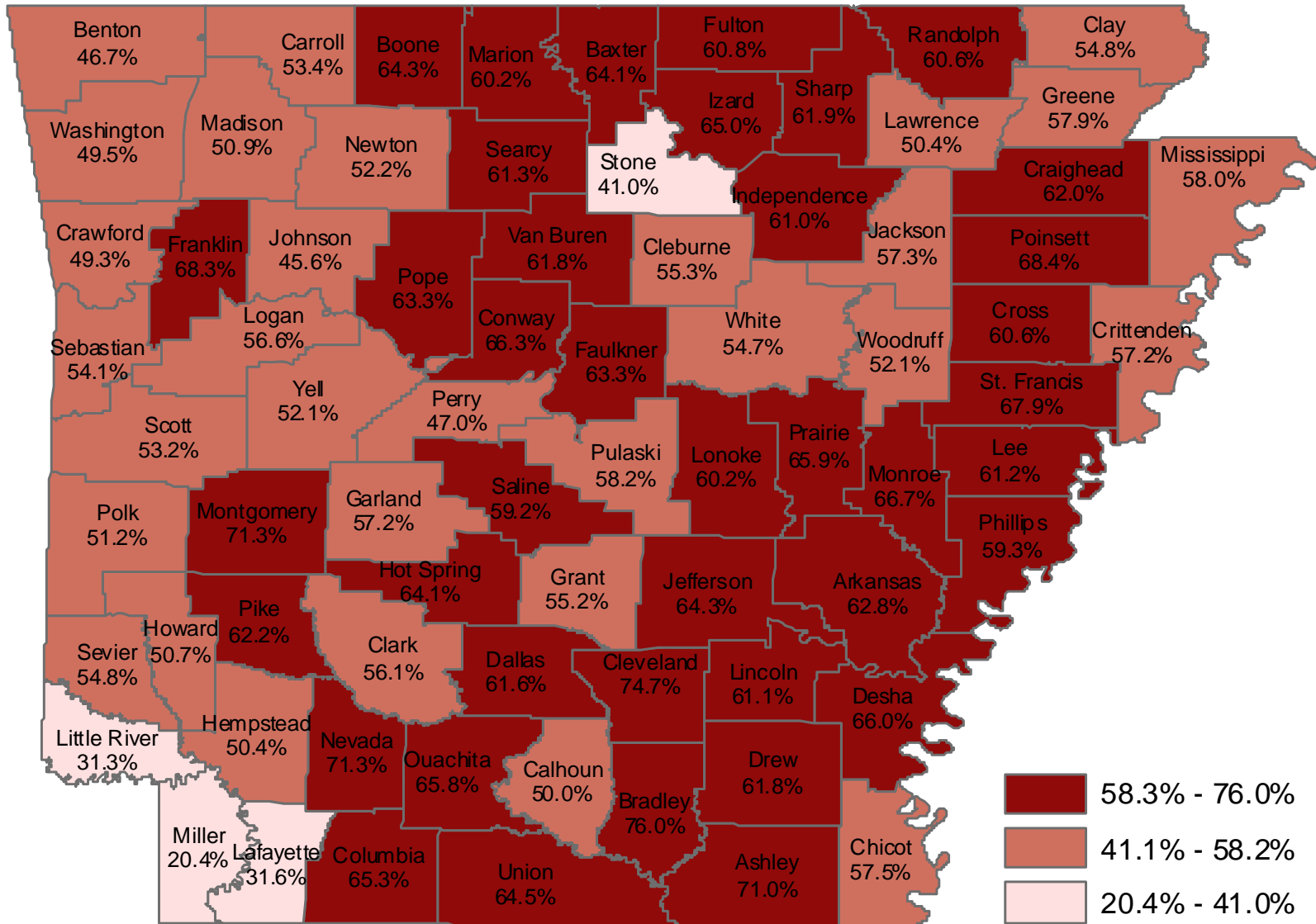
College-Going Rate by Gender



College-Going Rate by Race



2008 College-Going Rate by County



SUMMARY

- **College-going rates have remained close to the national averages over the last several years.**
- **College-going rates only focus on traditional-aged students at the beginning of the pipeline.**
- **To achieve higher degree production, retention and completion must also be considered for traditional and nontraditional students.**
- **Overall, Arkansas compares favorably with the nation on the College-Going Rate, but not as well with graduation or retention rates.**



What is Arkansas Doing to Improve College-Going Rates?

- College & Career-Ready Policy Institute
- Educational Renewal Zones
- Say Go College:
(<http://www.saygocollege.com>) sponsored by Arkansas Department of Higher Education