

# **Comprehensive Arkansas Higher Education Annual Report**

**December 1, 2009**



**College-Going Rate**

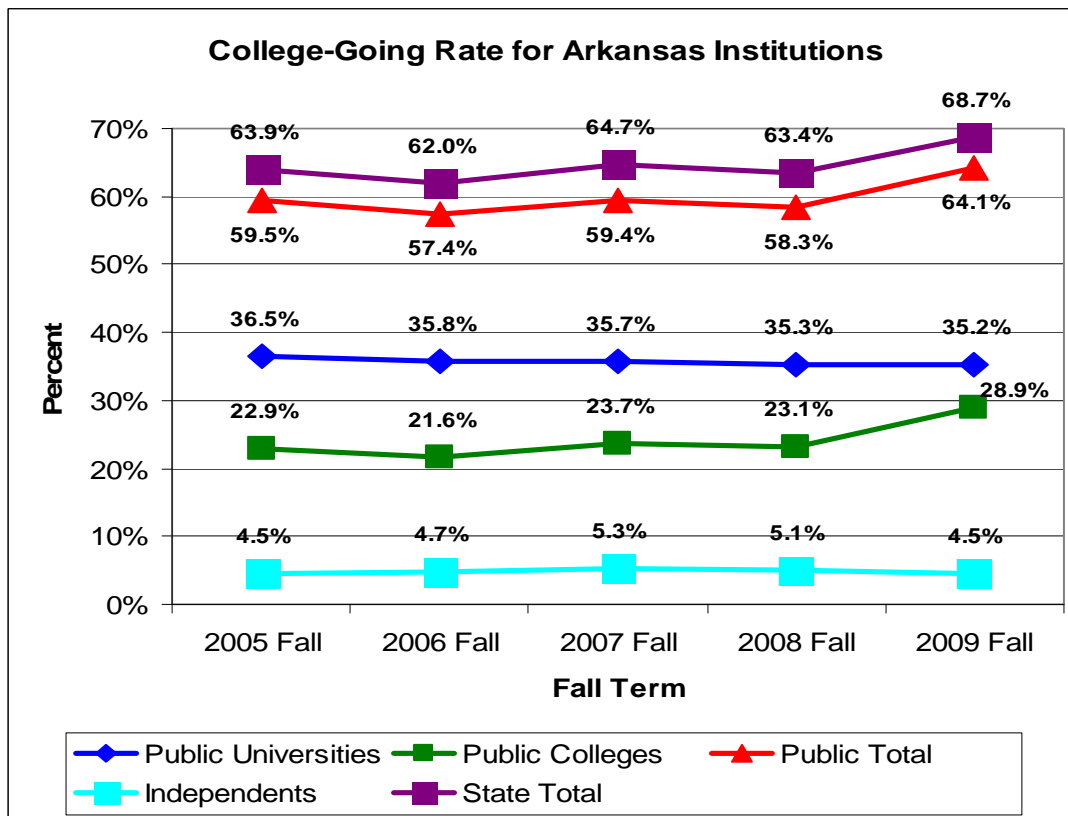
**Arkansas Department of Higher Education**  
114 East Capitol, Little Rock, Arkansas 72201



## Report on the College-Going Rate

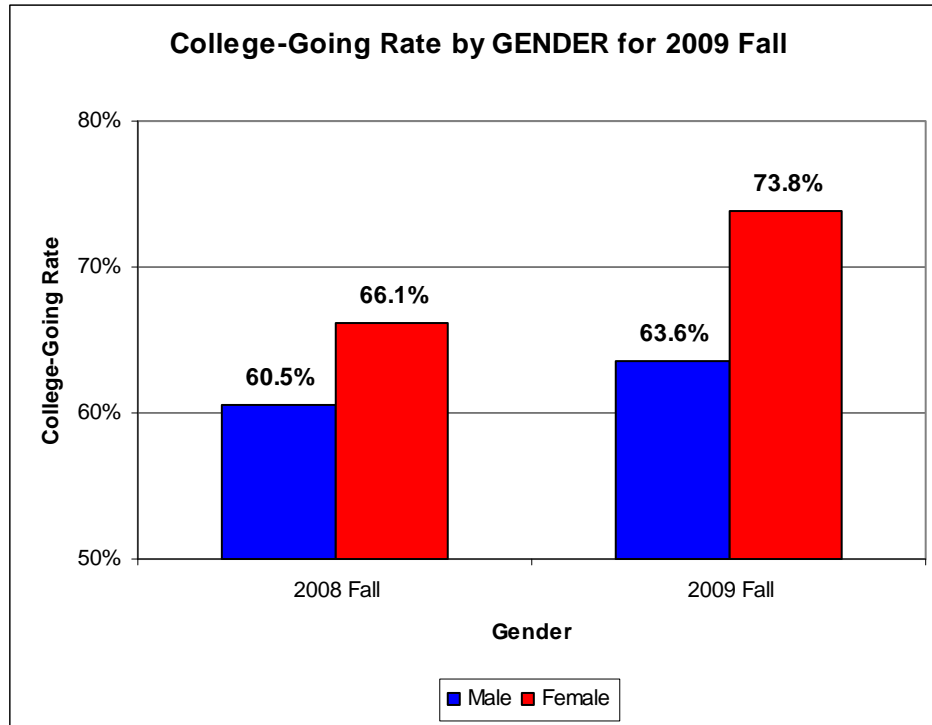
The college-going rate measures the proportion of students enrolling in postsecondary education in the fall semester after finishing high school, in most cases, immediately after high school. Current data are based on the fall 2009 student cohort enrolled first-time, full-time, and on-campus that attend an Arkansas public or independent institution after completing high school or GED. Since most students enrolling in postsecondary education do so immediately after completing high school, the college-going rate is an indicator of the total proportion that will enroll in postsecondary education. The percentage, therefore, reflects the accessibility of higher education as well as students' assessment of the value of attending college when compared to working, entering the military, traveling, or following other pursuits.

The college-going rate for all Arkansas **public and independent institutions** in fall 2009 is **68.7 percent**. This is an increase of 5.3 percent from the previous fall term (Attachment X-A). The proportion of this cohort entering public universities decreased by 0.1 percentage points to 35.2 percent, while the public colleges experienced an increase of 5.8 percentage points to 28.9 percent. The proportion of the cohort entering private or independent institutions decreased by 0.6 percentage points to 4.5 percent.

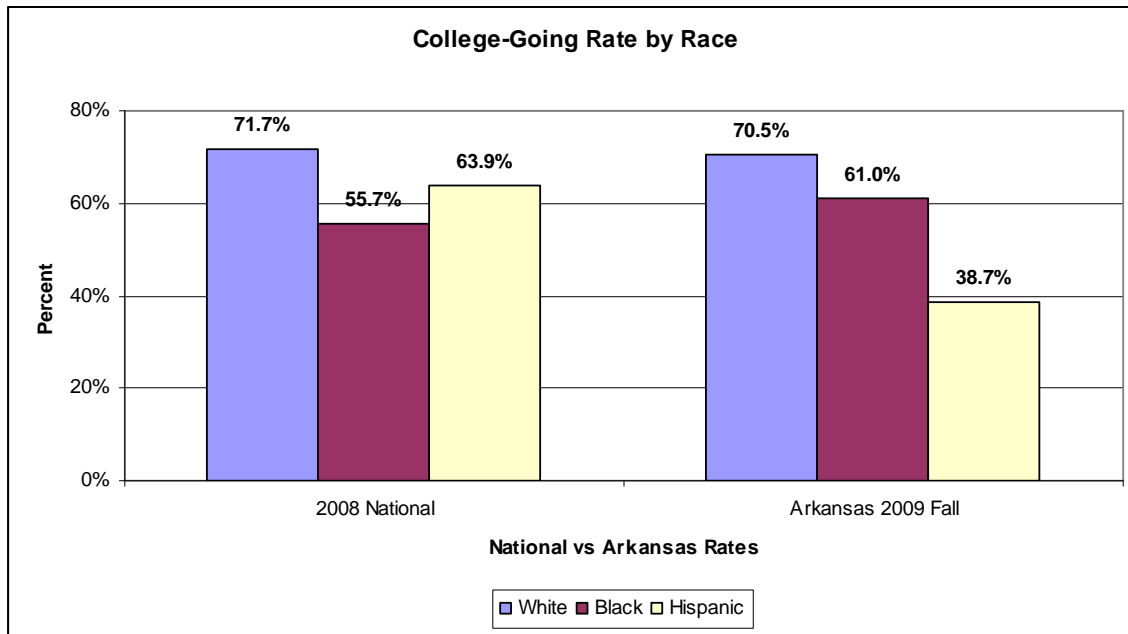


The college-going rate for all public institutions in fall 2009 increased by 5.8 percentage points to 64.1 percent.

The **public and independent** college-going rate in Arkansas in 2009 fall for females is 73.8 percent (an increase of 7.7 percentage points) compared to 63.6 percent for males (an increase of 3.1 percentage points). The college-going rate **nationally**<sup>1</sup> in 2008 for females is 71.6 percent (an increase of 3.3 percentage points) and for males is 65.9 percent (a decrease of 0.2 percentage points).



The **public and independent** college-going rate in 2008 for Arkansas white students is 70.5 percent (an increase of 4.9 percentage points), for blacks is 61.0 percent (an increase of 3.8 percentage points), and for Hispanics is 38.7 percent (an increase of 3.1 percentage points). The college-going rate **nationally**<sup>2</sup> in 2008 for white students is 71.7 percent, for black students is 55.7 percent, and for Hispanics is 63.9 percent.



The 2009 cohort base of 19,676 first-time, full-time, on-campus enrollments from Arkansas is 9.7 percent more than the previous year, while the number of high school graduates is increased by 1.3 percent from one-year earlier (see Attachment X-A). Recent projections by NCES indicate an expected increase of 11.0 percent of high school graduates for the period from 2005-06 to 2018-19<sup>3</sup>. Projected trends in the number of high school graduates could be impacted by changes in policies affecting graduation requirements.

The national college-going rate of 68.6 percent for 2008, the most recent year for which national data are available, increased by 1.4 percentage points from the previous year<sup>4</sup> (Attachment X-B). Arkansas' college-going rate for the same year was 63.4 percent, representing a 5.2 percentage point difference.

Much of the difference between the national rate and the rate of Arkansas is attributed to the out-migration of students, that is, Arkansas freshmen entering higher education in states other than Arkansas. If this out-migration number was included, Arkansas' college-going rate would be substantially higher<sup>5</sup>. However, since Arkansas is a net in-migrator of entering freshmen students (more out-of-state students come to Arkansas for college rather than Arkansans leave the state for college), this comparison is not valid and is used here only for illustrative purposes.

ADHE Executive Staff recommend that the AHECB accept this report.

<sup>1</sup> National Center for Education Statistics, *Digest of Education Statistics 2009*, Table 200

<sup>2</sup> National Center for Education Statistics, *Digest of Education Statistics 2009*, Table 201

<sup>3</sup> National Center for Education Statistics, *Projections of Education Statistics to 2018*, Table 26

<sup>4</sup> National Center for Education Statistics, *Digest of Education Statistics 2009*, Table 200

<sup>5</sup> National Center for Education Statistics, *Digest of Education Statistics 2009*, Table 223

**COLLEGE-GOING RATE FOR FIRST-TIME, FULL-TIME, ON-CAMPUS STUDENTS  
GRADUATING FROM ARKANSAS HIGH SCHOOLS AND  
ATTENDING ARKANSAS INSTITUTIONS, 2005-2009 FALL TERMS**

INSTITUTION	FIRST-TIME STUDENTS FOR FALL TERM									
	2005 Fall		2006 Fall		2007 Fall		2008 Fall		2009 Fall	
	Headcount	Percent	Headcount	Percent	Headcount	Percent	Headcount	Percent	Headcount	Percent
<b>Public Four-Year</b>										
ASUJ	1,208	4.5%	1,345	5.0%	1,328	4.9%	1,357	4.8%	1,227	4.3%
ATU	1,228	4.6%	1,219	4.5%	1,469	5.4%	1,391	4.9%	1,682	5.9%
HSU	461	1.7%	473	1.8%	615	2.3%	587	2.1%	512	1.8%
SAUM	407	1.5%	406	1.5%	338	1.2%	418	1.5%	452	1.6%
UAF	1,851	7.0%	1,851	6.9%	1,903	7.0%	1,874	6.6%	1,809	6.3%
UAFS	670	2.5%	684	2.6%	746	2.7%	834	2.9%	1,048	3.7%
UALR	665	2.5%	548	2.0%	736	2.7%	560	2.0%	612	2.1%
UAM	547	2.1%	556	2.1%	514	1.9%	587	2.1%	653	2.3%
UAMS	-	0.0%	-	0%	-	0.0%	-	0.0%	-	0.0%
UAPB	422	1.6%	344	1.3%	440	1.6%	498	1.8%	506	1.8%
UCA	2,269	8.5%	2,171	8.1%	1,624	6.0%	1,868	6.6%	1,583	5.5%
<b>Four-Year Sub-Totals</b>	<b>9,728</b>	<b>36.5%</b>	<b>9,597</b>	<b>35.8%</b>	<b>9,713</b>	<b>35.7%</b>	<b>9,974</b>	<b>35.3%</b>	<b>10,084</b>	<b>35.2%</b>
<b>Public Two-Year</b>										
ANC	270	1.0%	212	0.8%	233	0.9%	196	0.7%	299	1.0%
ASUB	567	2.1%	574	2.1%	595	2.2%	782	2.8%	945	3.3%
ASUMH	204	0.8%	166	0.6%	188	0.7%	237	0.8%	252	0.9%
ASUN	120	0.5%	129	0.5%	123	0.5%	198	0.7%	257	0.9%
BRTC	311	1.2%	380	1.4%	463	1.7%	356	1.3%	512	1.8%
CCCUA	107	0.4%	122	0.5%	152	0.6%	151	0.5%	151	0.5%
EACC	227	0.9%	235	0.9%	215	0.8%	217	0.8%	258	0.9%
MSCC	127	0.5%	139	0.5%	140	0.5%	165	0.6%	188	0.7%
NAC	370	1.4%	331	1.2%	365	1.3%	409	1.4%	480	1.7%
NPCC	282	1.1%	254	0.9%	306	1.1%	354	1.3%	521	1.8%
NWACC	535	2.0%	551	2.1%	642	2.4%	622	2.2%	795	2.8%
OTC	186	0.7%	156	0.6%	165	0.6%	164	0.6%	167	0.6%
OZC	186	0.7%	164	0.6%	212	0.8%	174	0.6%	221	0.8%
PCCUA	205	0.8%	146	0.5%	142	0.5%	176	0.6%	231	0.8%
PTC	994	3.7%	830	3.1%	895	3.3%	811	2.9%	1,091	3.8%
RMCC	104	0.4%	110	0.4%	98	0.4%	99	0.3%	120	0.4%
SACC	104	0.4%	97	0.4%	131	0.5%	156	0.6%	151	0.5%
SAUT	104	0.4%	116	0.4%	161	0.6%	166	0.6%	176	0.6%
SEAC	230	0.9%	271	1.0%	222	0.8%	205	0.7%	281	1.0%
UACCB	226	0.8%	202	0.8%	229	0.8%	207	0.7%	297	1.0%
UACCH	220	0.8%	188	0.7%	282	1.0%	205	0.7%	279	1.0%
UACCM	424	1.6%	417	1.6%	483	1.8%	473	1.7%	621	2.2%
<b>Two-Year Sub-Totals</b>	<b>6,103</b>	<b>22.9%</b>	<b>5,790</b>	<b>21.6%</b>	<b>6,442</b>	<b>23.7%</b>	<b>6,523</b>	<b>23.1%</b>	<b>8,293</b>	<b>28.9%</b>
<b>Public Total</b>	<b>15,831</b>	<b>59.5%</b>	<b>15,387</b>	<b>57.4%</b>	<b>16,155</b>	<b>59.4%</b>	<b>16,497</b>	<b>58.3%</b>	<b>18,377</b>	<b>64.1%</b>
<b>Private/Independent</b>										
ABC	74	0.3%	102	0.4%	270	1.0%	251	0.9%	124	0.4%
CBC	90	0.3%	75	0.3%	100	0.4%	79	0.3%	102	0.4%
CRC	40	0.2%	39	0.1%	42	0.2%	43	0.2%	37	0.1%
HC	149	0.6%	202	0.8%	180	0.7%	172	0.6%	187	0.7%
HU	216	0.8%	214	0.8%	226	0.8%	241	0.9%	231	0.8%
JBU	61	0.2%	74	0.3%	86	0.3%	85	0.3%	-	0.0%
LC	87	0.3%	96	0.4%	98	0.4%	73	0.3%	157	0.5%
OBU	181	0.7%	193	0.7%	187	0.7%	199	0.7%	188	0.7%
PSC	75	0.3%	55	0.2%	61	0.2%	63	0.2%	68	0.2%
UO	98	0.4%	91	0.3%	93	0.3%	118	0.4%	84	0.3%
WBC	114	0.4%	112	0.4%	110	0.4%	119	0.4%	121	0.4%
<b>Private Sub-Total</b>	<b>1,185</b>	<b>4.5%</b>	<b>1,253</b>	<b>4.7%</b>	<b>1,453</b>	<b>5.3%</b>	<b>1,443</b>	<b>5.1%</b>	<b>1,299</b>	<b>4.5%</b>
Total Entering Cohort	17,016	2.8%	16,640	-2.2%	17,608	5.8%	17,940	1.9%	19,676	9.7%
Arkansas HS Graduates	26,621	-2.1%	26,822	0.8%	27,206	1.4%	28,295	4.0%	28,659	1.3%
<b>COLLEGE-GOING RATE</b>		<b>63.9%</b>		<b>62.0%</b>		<b>64.7%</b>		<b>63.4%</b>		<b>68.7%</b>

## NOTES:

(1) NR = Not Reported

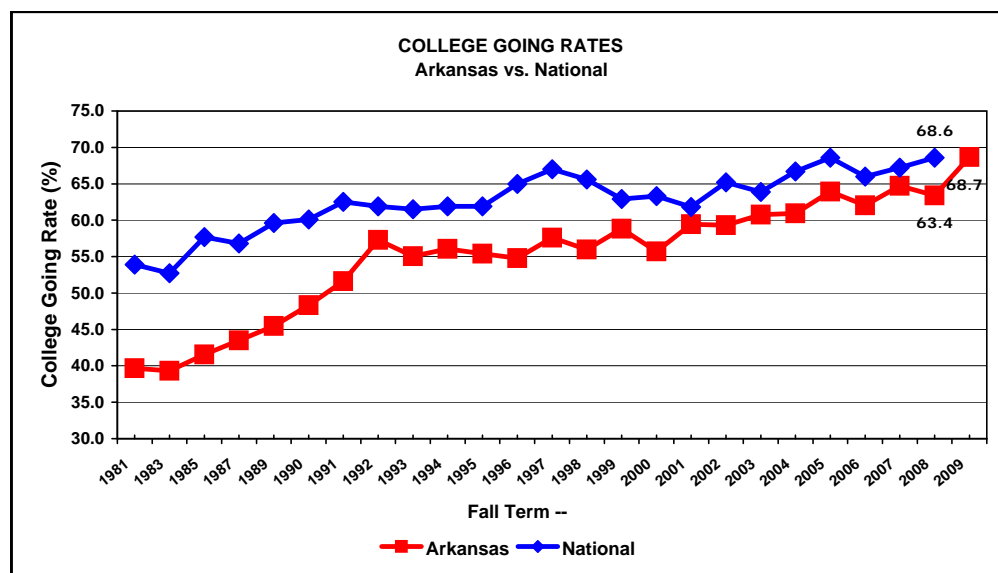
(2) Entering Cohorts = first-time, full-time, on-campus, in-state students at Arkansas public and independent institutions.

(3) College-Going Rate = the entering cohort as a percentage of the total number of students graduating from a public high school in the previous spring.

**ARKANSAS COLLEGE GOING RATE HISTORY  
1980 - 2008**

FALL TERM --	# of FIRST-TIME ENTERING, FULL-TIME STUDENTS	# of PUBLIC HIGH SCHOOL SPRING GRADUATES	ARKANSAS COLLEGE GOING RATE	NATIONAL COLLEGE GOING RATE
1980	12,481	29,052	43.0%	49.3%
1981	11,663	29,414	39.7%	53.9%
1982	11,350	29,710	38.2%	50.6%
1983	11,169	28,410	39.3%	52.7%
1984	10,658	27,075	39.4%	55.2%
1985	11,025	26,517	41.6%	57.7%
1986	11,378	26,527	42.9%	53.8%
1987	11,842	27,224	43.5%	56.8%
1988	12,316	27,776	44.3%	58.9%
1989	12,699	27,920	45.5%	59.6%
1990	12,798	26,475	48.3%	60.1%
1991	13,232	25,640	51.6%	62.5%
1992	14,808	25,845	57.3%	61.9%
1993	14,120	25,655	55.0%	61.5%
1994	14,011	24,990	56.1%	61.9%
1995	13,653	24,636	55.4%	61.9%
1996	13,779	25,152	54.8%	65.0%
1997	14,468	25,123	57.6%	67.0%
1998	15,190	27,147	56.0%	65.6%
1999	15,820	26,896	58.8%	62.9%
2000	15,222	27,335	55.7%	63.3%
2001	16,104	27,100	59.4%	61.8%
2002	16,049	27,066	59.3%	65.2%
2003	16,741	27,555	60.8%	63.9%
2004	16,560	27,181	60.9%	66.7%
2005	17,016	26,621	63.9%	68.6%
2006	16,640	26,822	62.0%	66.0%
2007	17,608	27,206	64.7%	67.2%
2008	17,940	28,295	63.4%	68.6%
<b>2009</b>	<b>19,676</b>	<b>28,659</b>	<b>68.7%</b>	

n/a = not available



1 ASUJ merged with Delta Technical institution in 2001, the workforce education at Marked Tree (ASUTC) is non-credit and not reported to ADHE while general education credit courses and students are reported.

2 ATU merged with Arkansas Valley Technical institution effective July 1, 2003

3 UAFS (previously WC) became a four-year institution in January 2002

4 UAM merged with Great Rivers Technical institution and Forest Echoes Technical institution effective July 1, 2003

5 ANC (previously MCCC) merged with Cotton Boll Technical institution effective July 1, 2003

6 ASUB merged with Foothills Technical institution effective July 1, 2003

7 NPCC (previously GCCC) merged with Quapaw Technical institution effective July 1, 2003

Source: SIS; NCES, Digest of Education Statistics 2009; Table 200

# **Arkansas Higher Education Coordinating Board**

## **Agenda Item #5 Annual Report on College-Going Rate July 30, 2010**



**Rick Jenkins  
Associate Director for Planning and Accountability**

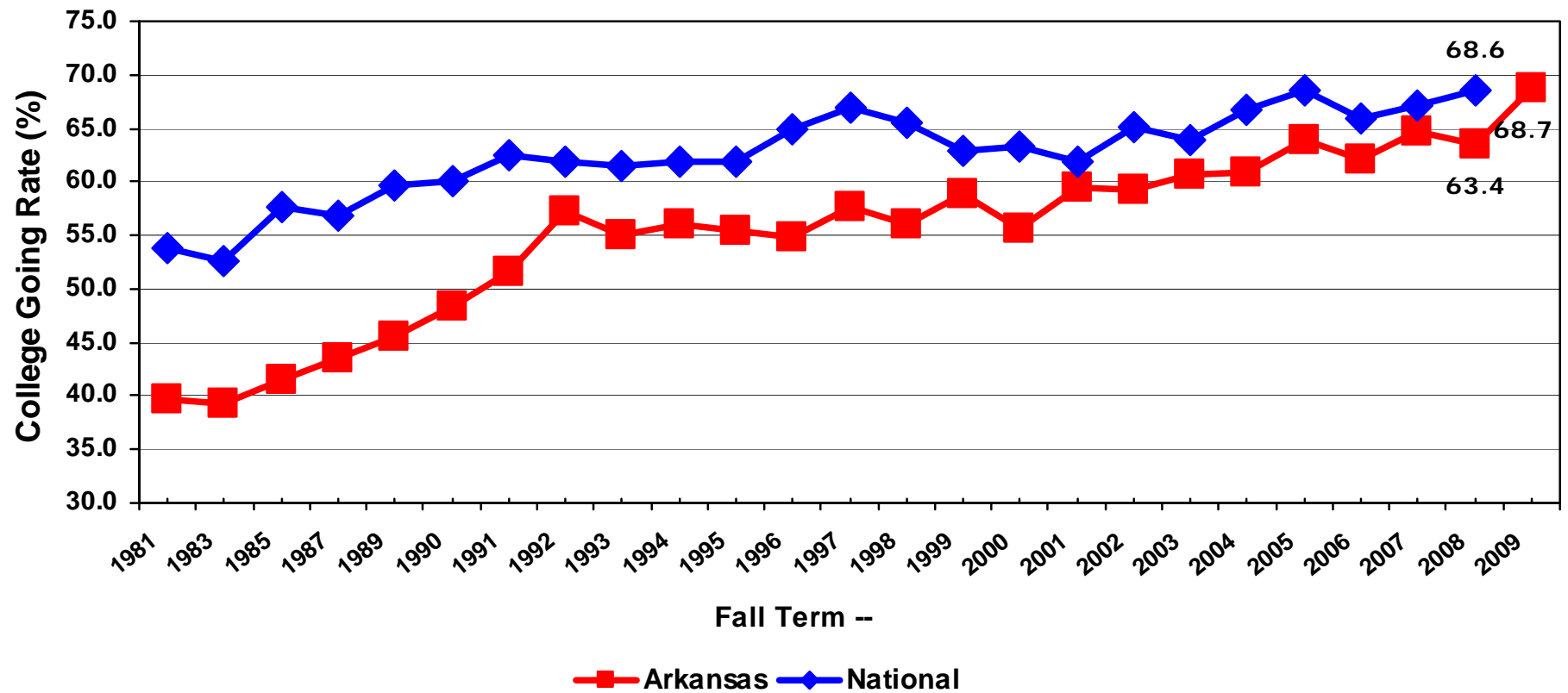


# College-Going Rate

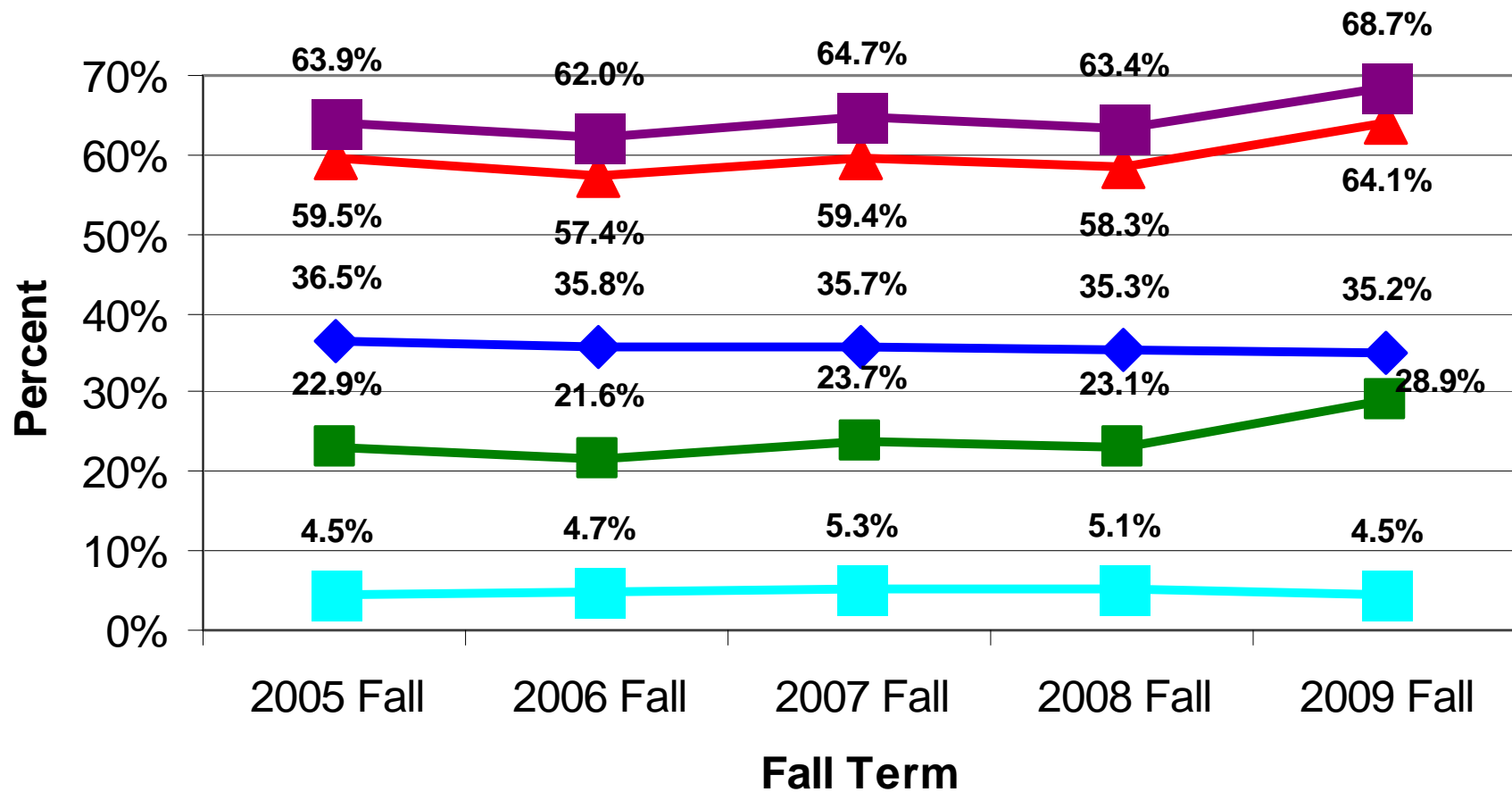
- **Fall 2009 Cohort (AY 2010, Term 1)**
- **First-Time**
- **Full-Time**
- **On-Campus**
- **High School Diploma or GED**
- **Arkansas Public and Independent Institutions**



### COLLEGE GOING RATES Arkansas vs. National

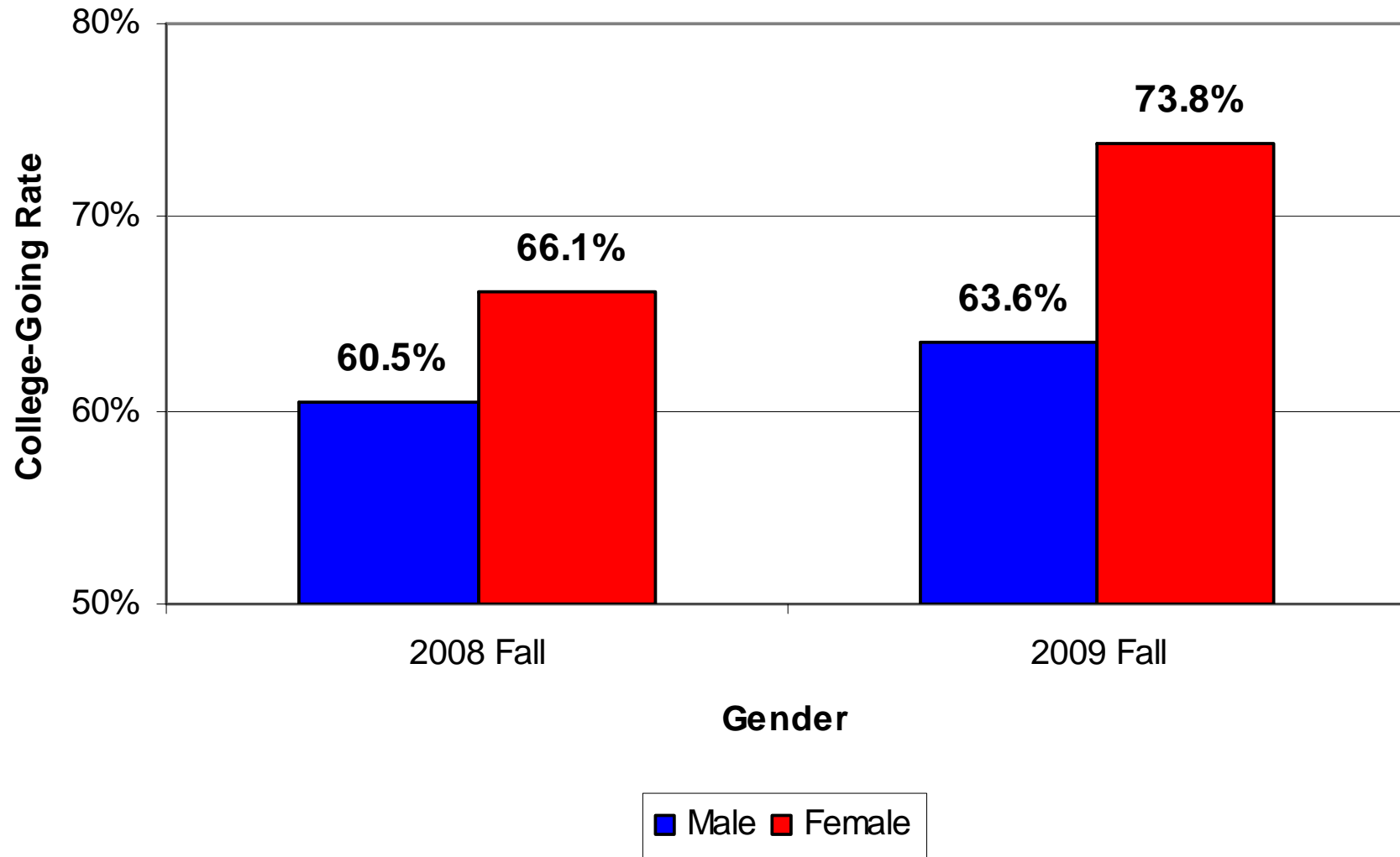


## College-Going Rate for Arkansas Institutions

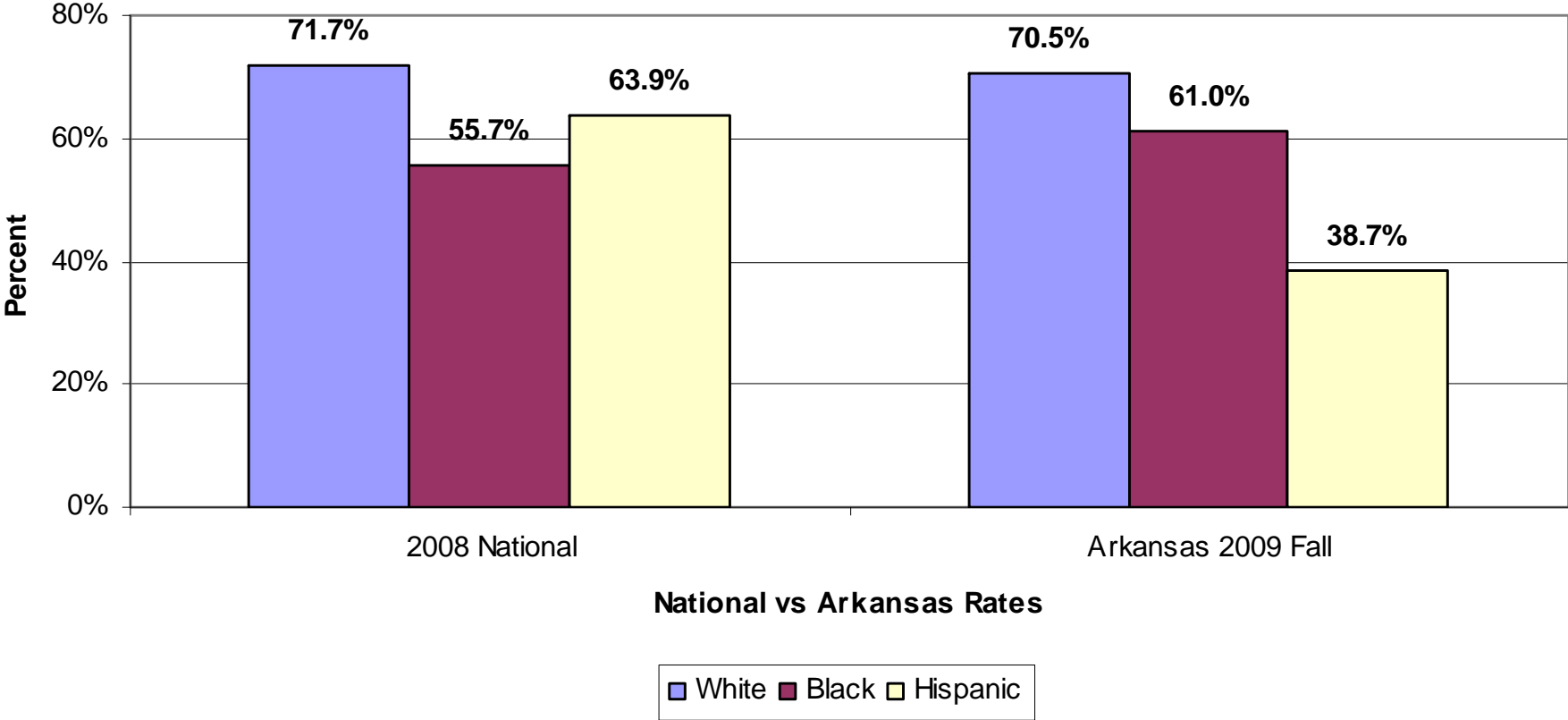


◆ Public Universities    ■ Public Colleges    ▲ Public Total  
■ Independents    ■ State Total

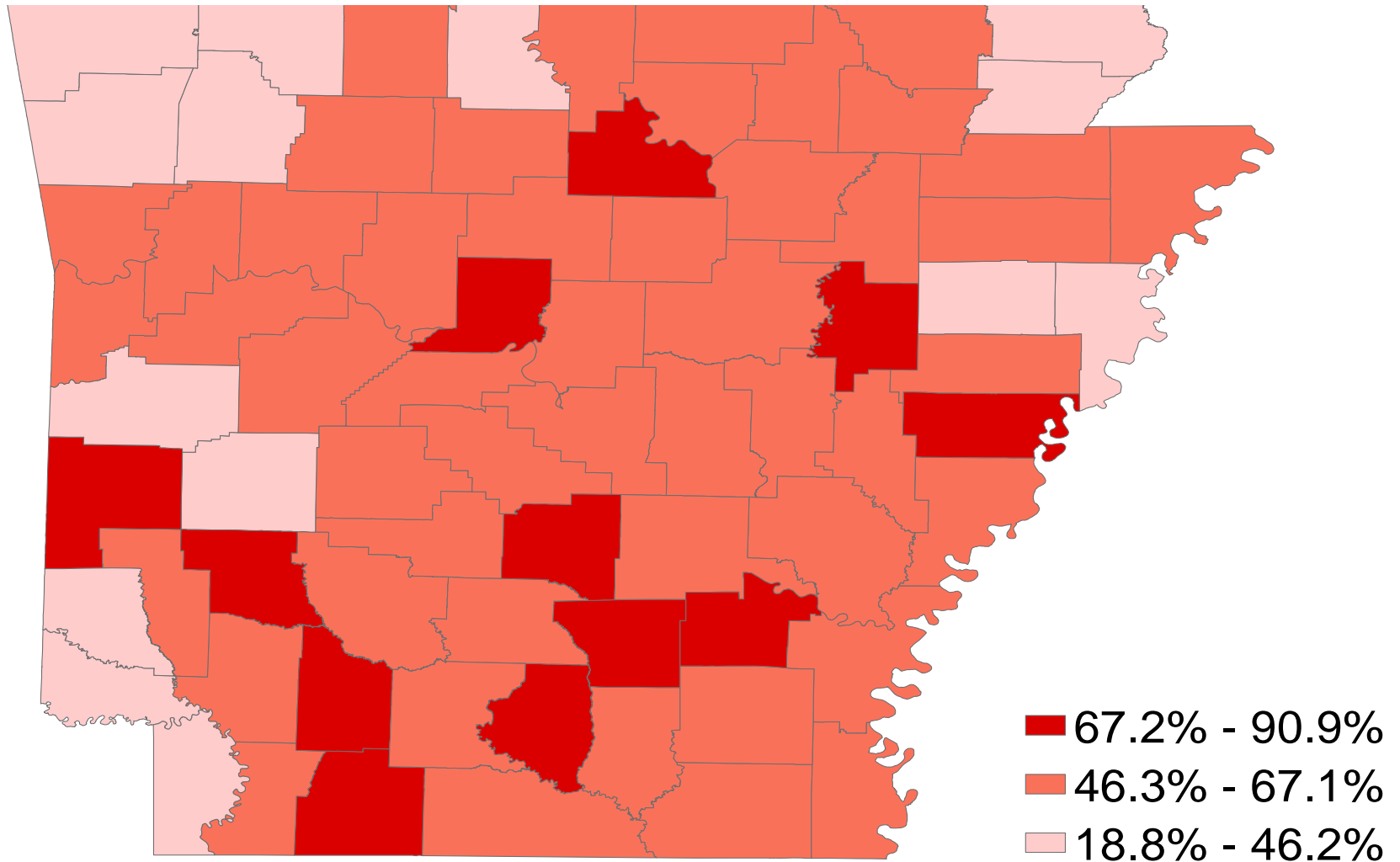
## College-Going Rate by GENDER 2008 Fall vs. 2009 Fall



**College-Going Rate by Race**



# 2009 Fall Arkansas College Going Rate



Source: Arkansas Department of Higher Education, 2010.

Note: The above is based on 2009 Fall Term enrollment only including: First-Time Entering Students Only; Attending College Full-Time; Taking On-Campus Courses; Is an In-State Student.

# **SUMMARY**

- **College-going rates have remained close to the national averages over the last several years.**
- **College-going rates only focus on traditional-aged students at the beginning of the pipeline.**
- **To achieve higher degree production, retention and completion must also be considered for traditional and nontraditional students.**
- **Overall, Arkansas compares favorably with the nation on the College-Going Rate, but not as well with graduation or retention rates.**



# What is Arkansas Doing to Improve College-Going Rates?

- College & Career-Ready Policy Institute
- Educational Renewal Zones
- Say Go College:  
(<http://www.saygocollege.com>)  
sponsored by Arkansas Department of  
Higher Education